

ROUSSILLON

AUTOMATIC SUBMERGED COVER



- Discretion and elegance
- Protects all the space around the pool
- For new or existing pools
- Grating out of the water or submerged



Why choose the ROUSSILLON Automatic Cover



GUARANTEED SAFETY

The ROUSSILLON submerged automatic cover ensures optimal pool safety. It complies with the **NF P90-308** standard according to the safety system chosen:

- **Stainless steel safety system**, the cover is compliant if, and only if, the **interior width of the pool is greater than or equal to 2.30 m**.
- **Safety system in ABS** or with **FABRIC** strap, the cover is compliant if, and only if, the **interior width of the pool is equal to or greater than 2 m**.

Heavy-duty wall- or top-mount clamps close and secure the pool permanently. Once fixed in position, access to the water is not possible*. Once closed, the ROUSSILLON cover also protects the pool from impurities: leaves, pollen, dust, etc. It also provides a thermal barrier, reducing water evaporation and heat loss. Choose polycarbonate slats and you will gain in temperature.

TECHNICAL AND PRACTICAL BENEFITS



Easy to use: thanks to its motorization and, with a simple turn of the key or from your smartphone via the optional Cover Connect App, the cover rolls up and unrolls easily in about 3 minutes.

Its rollers, on both sides of the first slat of the shutter, ensure a perfect guide. This avoids friction and risk of damage to the pool.

Peace of mind: equipped with a limit switch system, once closed, the cover **stops automatically at the end of the pool**.

Perfectly adapted to market developments: for users who have opted for water treatment with a salt water chlorinator, each model is equipped with a contact to control the dosing device. According to the instructions you send to the chlorinator, the chlorine will be produced automatically depending on whether the automatic cover is open or closed.



AESTHETIC, FRENCH MANUFACTURE



All the accessories used in our covers are of approved quality, aesthetic and hard-wearing.

- Roller shaft diameter 146 or 196 mm in aluminum, 300 mm in stainless steel.
- Wide choice of colors of PVC slats with anti-UV and anti-stain treatment or in POLYCARBONATE. The stainless steel safety system straps are elegantly matched to the color of the slats.
- Finally, with the same idea for the finish, the beams and gratings match the whole thanks to the choice of materials, dimensions and colors.

* **Important:** a safety cover is not a substitute for common sense or individual responsibility. It is not intended to replace the vigilance of parents and adults, who still have to be there to protect others, especially young children.

The ROUSSILLON Automatic Cover is multi-purpose



GRATING OUT OF THE WATER

SUBMERGED GRATING

AVAILABLE MOTORIZATION

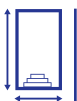
MOTOR IN SHAFT

OUT OF WATER/SUBMERGED

With a motor fitted in the submerged shaft, this choice is ideal for pools that are being renovated.



+ Easy wall- or top-mount multi-purpose, it adapts to existing or new pools.



Pool (inner dim.): **8 x 12 m max.***



4 YEARS WARRANTY ON MOTOR AND BOX



Motor: **Tubular** IP68 **WITH** limit switch.



SWITCH ON BASE

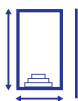
MOTOR IN DRY PIT

OUT OF WATER/SUBMERGED

The motor is housed in a dry box in a specific area outside the pool. Provisions must be made for this area when the pool is being built. The motor is sealed by a wall bushing.



+ This solution has the benefit of easy access to the motor for maintenance work. It adapts to large pool sizes.



Pool (inner dim.): **11 x 20 m max.***



5 YEARS WARRANTY ON MOTOR AND BOX



Motor: motor housed in a dry box outside the pool. IP55 **WITH** limit switch



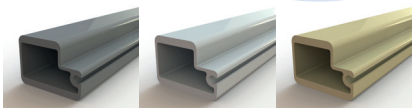
SWITCH ON BASE

**Variable according to the depth of the shaft in relation to the water level.*

BEAM AVAILABLE

BEAM KIT OR PARTITION KIT for quick and easy installation

- IN LACQUERED ALUMINUM 3 COLORS:



For gratings **OUT OF THE WATER** Wood and aluminum

- **2 HEIGHTS:** 110 or 70 mm depending on the width of the pool and the height of the desired water level.

Wall- or top-mounted



FIBERGLASS-REINFORCED POLYESTER BEAM

For **SUBMERGED** gratings PVC, Stainless steel, Resin

Gray color: not visible in the pool

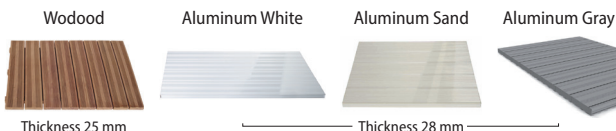
- **HEIGHT: 200 mm.**

Wall mounting with 316L stainless steel housing

GRATING AVAILABLE

OUT OF WATER

- In **Aluminum** thickness 28 mm **3 COLORS:** 
- **Exotic wood** thickness 25 mm

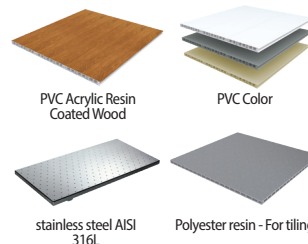


Thickness 25 mm

Thickness 28 mm

SUBMERGED

- In **PVC Acrylic Resin Coated Wood**
- In **PVC Color**
- In **stainless steel AISI 316L**
- Made of fiberglass-reinforced **Polyester resin - For tiling**



PVC Acrylic Resin Coated Wood

PVC Color

stainless steel AISI 316L

Polyester resin - For tiling

ROUSSILLON, THE COMPONENTS:



AUTOMATIC COVER SLATS

The slats are an integral component of the submerged automatic cover. They must comply with the standard and be aesthetic and hard-wearing.

2 choices of slat: **PVC** or **POLYCARBONATE**. Whatever your choice, they guarantee:

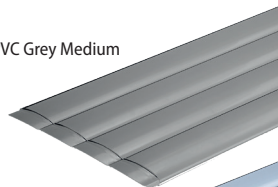
- compliance with the standard,
- UV and shock resistance,
- a sleek blade profile and a wide range of colors to complement the surroundings,
- excellent buoyancy and a 3-years warranty,
- compatibility with water treatment by salt water chlorinator,

PVC slats are the first choice, however, thanks to their design, slats made of **POLYCARBONATE** guarantee greater resistance to:

- **shocks**, about 8 times more than PVC (45 mn hailstone test).
- **temperature**, deformation point (VICAT) at 140° against 80° on a PVC slat.
- **the passing of time**, very good resistance to ageing.

- > **POLYCARBONATE** slats help **HEAT THE WATER**
- > **Compatible with ALL WATER TREATMENTS** except bromine

PVC Grey Medium



PVC Grey



PVC White



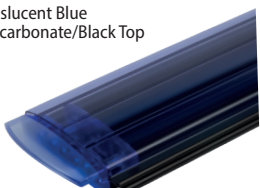
PVC Sand



First slat with guide wheel



Translucent Blue Polycarbonate/Black Top



Transparent Polycarbonate/Black Top



Grey Polycarbonate/Black Top



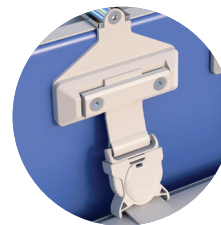
SAFETY SYSTEMS

WALL- OR TOP-MOUNTED

Loop system with fabric strap

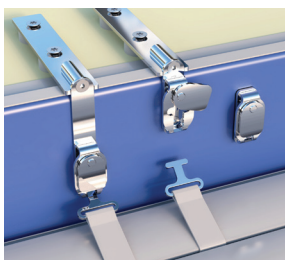


ABS system



Stainless steel system

316 L stainless steel loop + PVC strap in the color of the slat



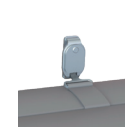
White



Sand



Grey



Medium Grey

COVER CONNECT OPTION

COVER CONNECT combines a wireless wall-mounted control unit + a Bluetooth pairing terminal using a free mobile application.

Standard-compliant, it will let you to open and close your pool from your smartphone or from the secure box, **NO NEED FOR A KEY!**

Request COVER CONNECT documentation!



mobile app

